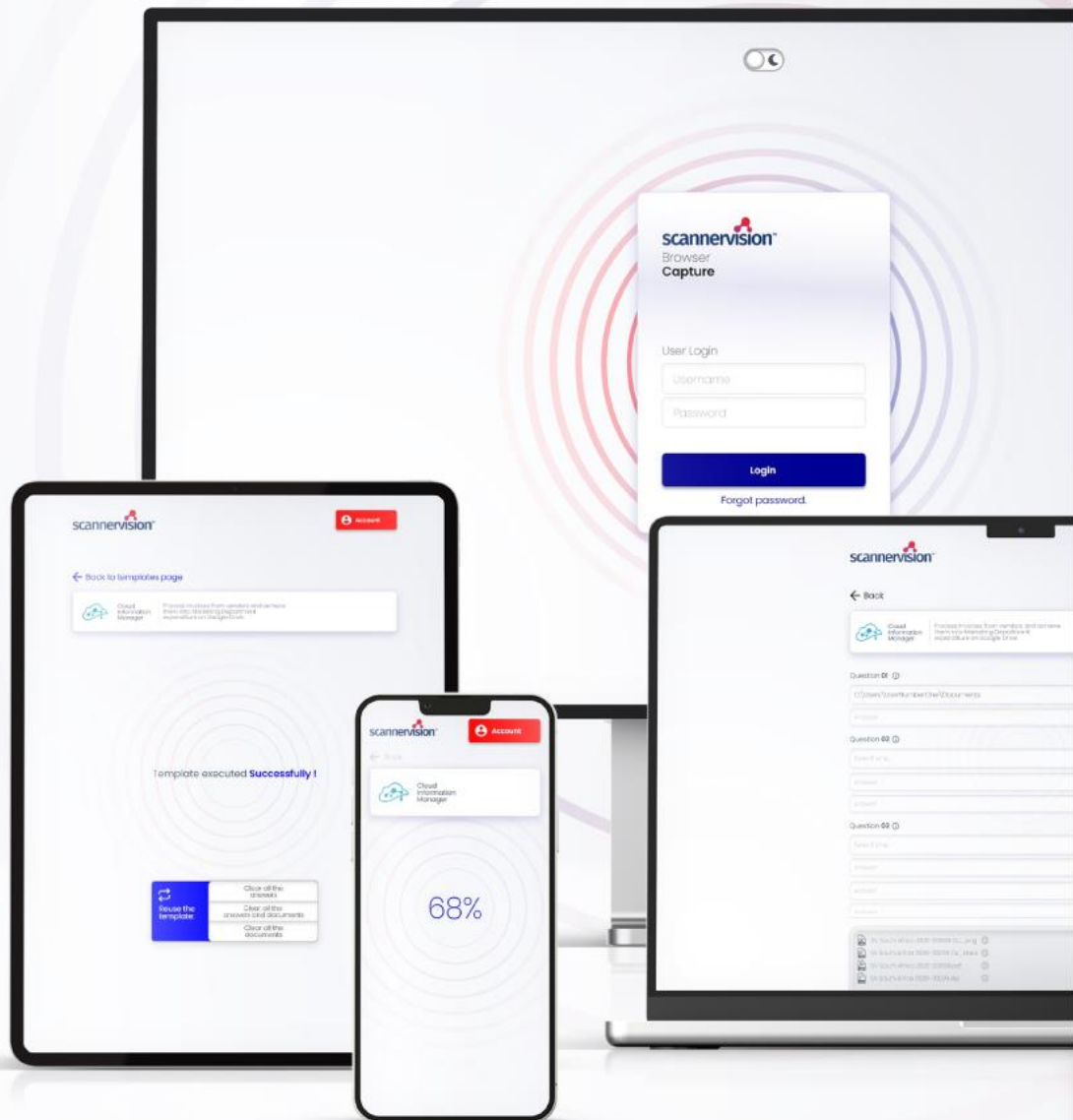


User Manual

ScannerVision™

Browser Capture



Introduction

This document describes the requirements of the **ScannerVision Browser Capture** and provides instructions on how to configure the Client. Other essential configuration steps that are part of the basic ScannerVision features (e.g. installation, configuring Networking Settings, templates, Users, etc) are not covered by this document.

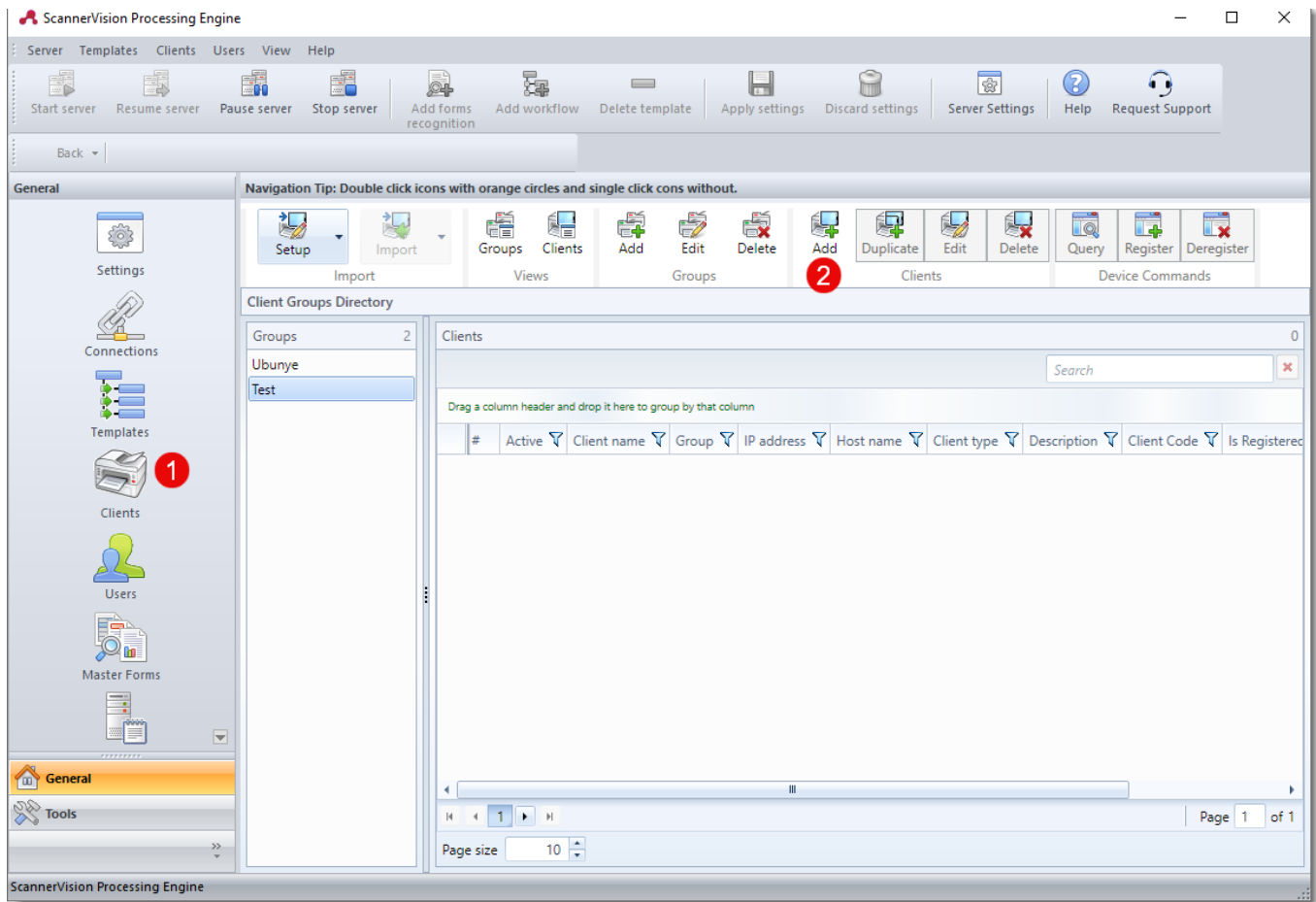
Software Requirements

The ScannerVision Browser Capture requires **ScannerVision Server V9.13.2.1651** and **HPN V9.12.1.1275** or higher.

ScannerVision Browser Capture is compatible with all current browsers, including but not limited to Microsoft Edge, Apple Safari, Google Chrome, Mozilla Firefox, Opera, etc.

Should you have any questions, please do not hesitate to contact our support team at support@ubunye.com for assistance.

Client Configuration



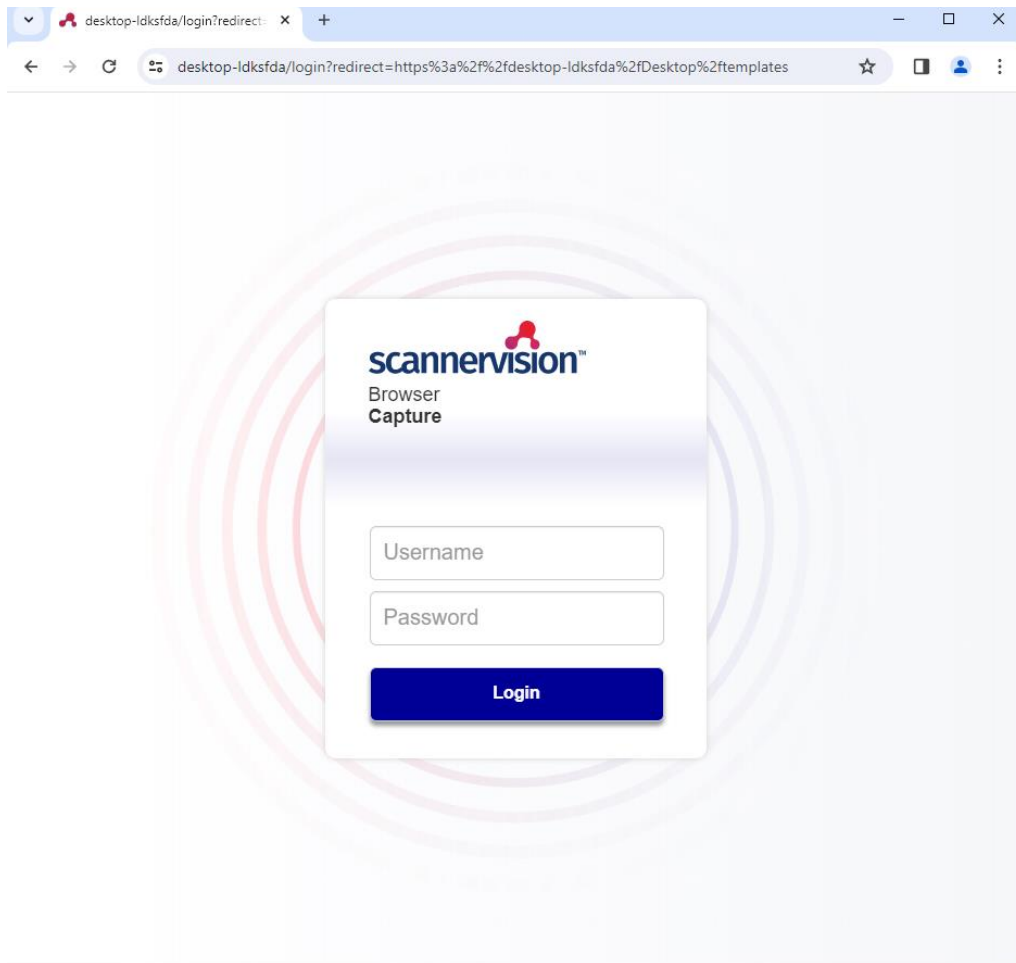
Adding a client:

1. Click **Client** from the navigation pane.
2. Click **Add** button to add new client.

3. Make sure **Active** checkbox is ticked.
4. Select **Browser capture** as Client type.
5. Enter **Client name**.
6. Enter short description of the client (optional).
7. Enter the **IP address or Host** of the client computer.
8. Select appropriate **Authentication method** (if needed)
9. Select **Client Groups** if applicable.
10. Select **Available Templates** if Authentication method **None** is selected.
11. Click **Save**.

Note: For details information about each property, refer to the "Adding a Client" section in the ScannerVision User Manual.

Browser Capture Operation

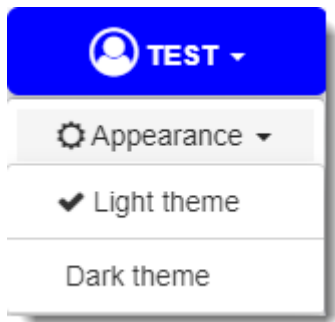
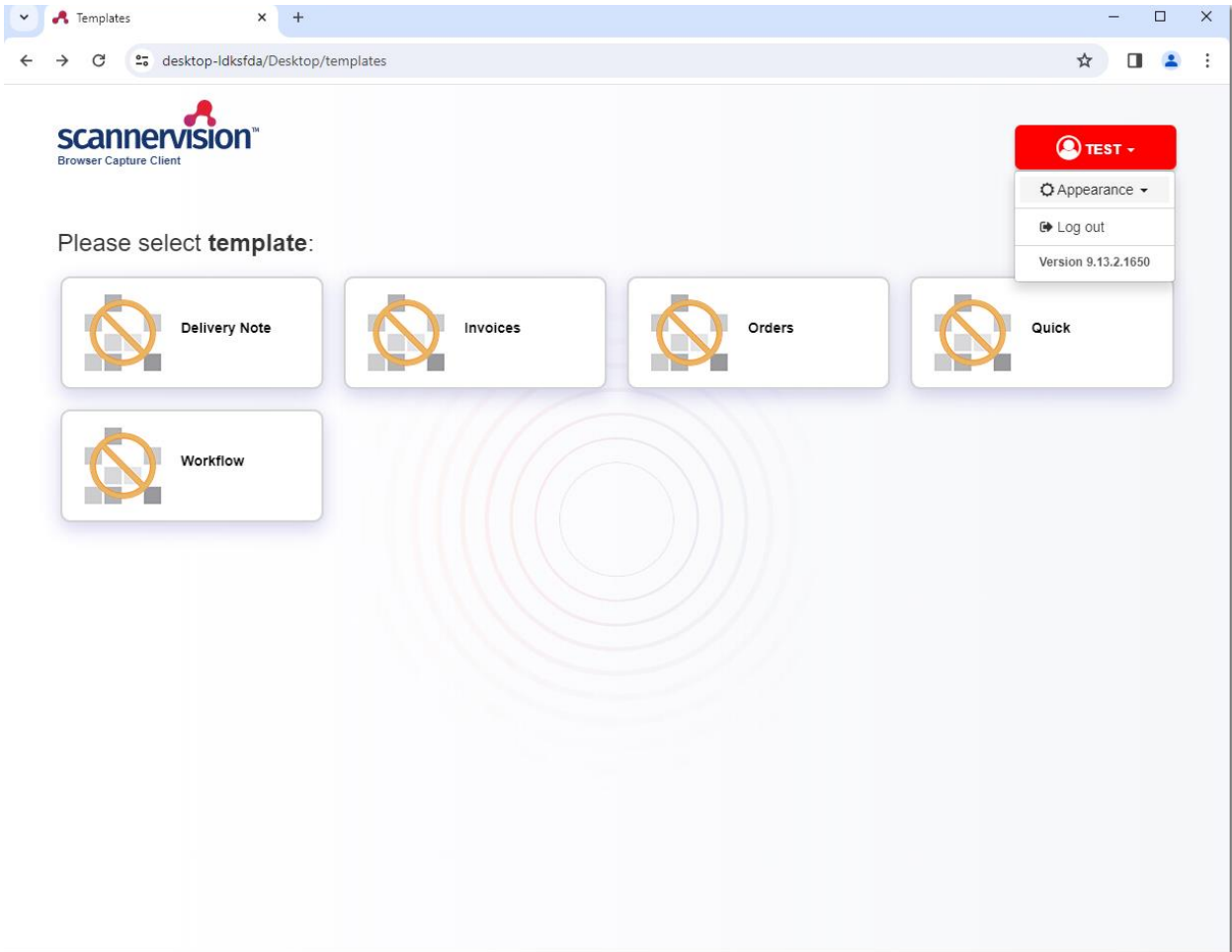


Login to ScannerVision Browser Capture:

1. From client computer, enter ScannerVision server IP address or hostname in the browser as per below format.

**https://[IP or
Hostname]/Desktop/templates**

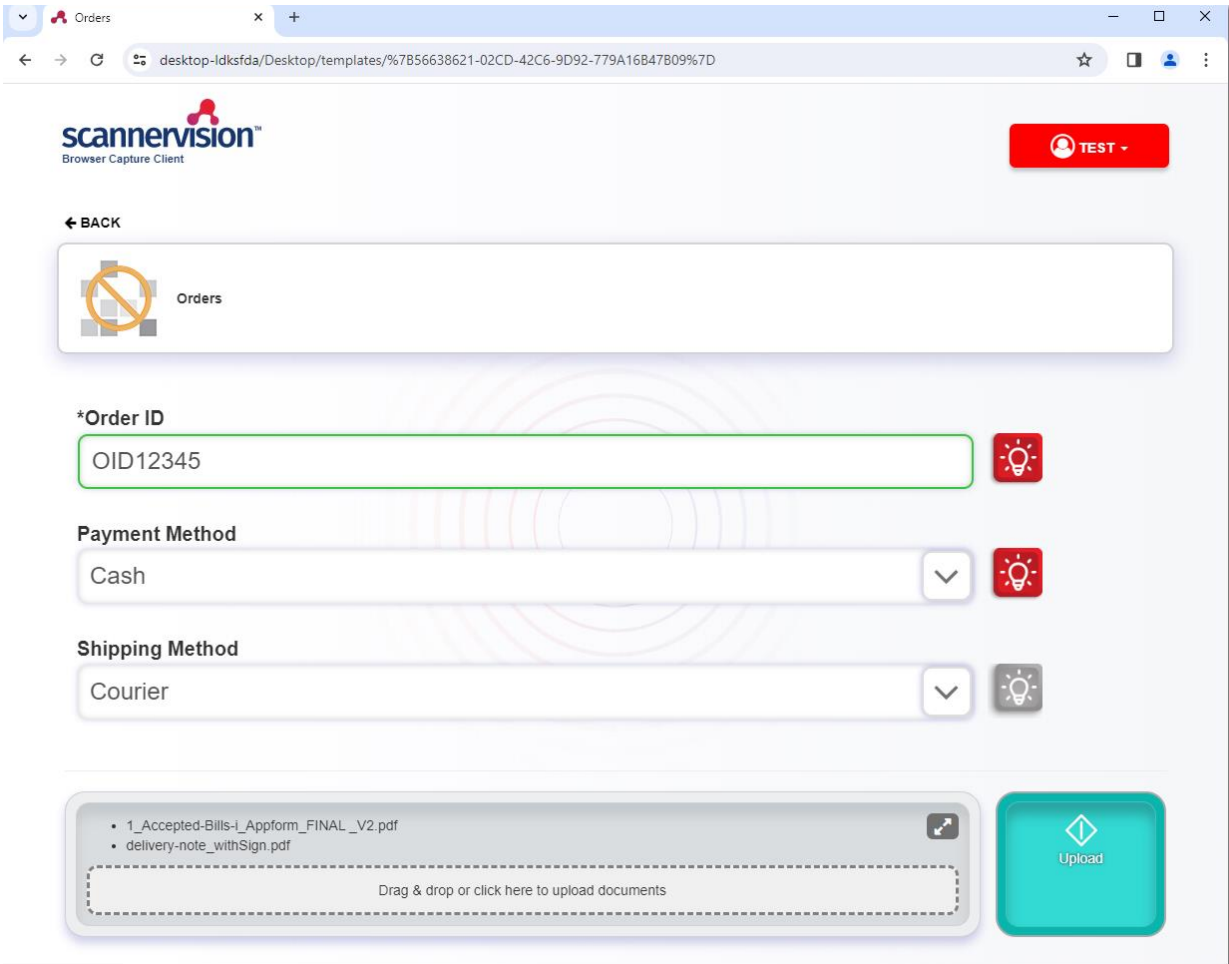
2. If your authentication method is **None**, you will be redirected to the templates page.
3. If your **Authentication method** is other than None, please login with appropriate credential.



Settings that enable you to select between a light or dark theme.

Template List Page:

1. Upon logging in, you will be taken to the Template page. Here, you'll find a list of templates assigned to you.
2. To select and customize the theme, navigate to the top right of the screen, click on "**Account Name/Settings**", and then choose "**Appearance**" from the options provided.
3. If you authenticate with an account, you will find the option to **Log out** available.
4. The version of the ScannerVision server is displayed at the bottom of the menu.

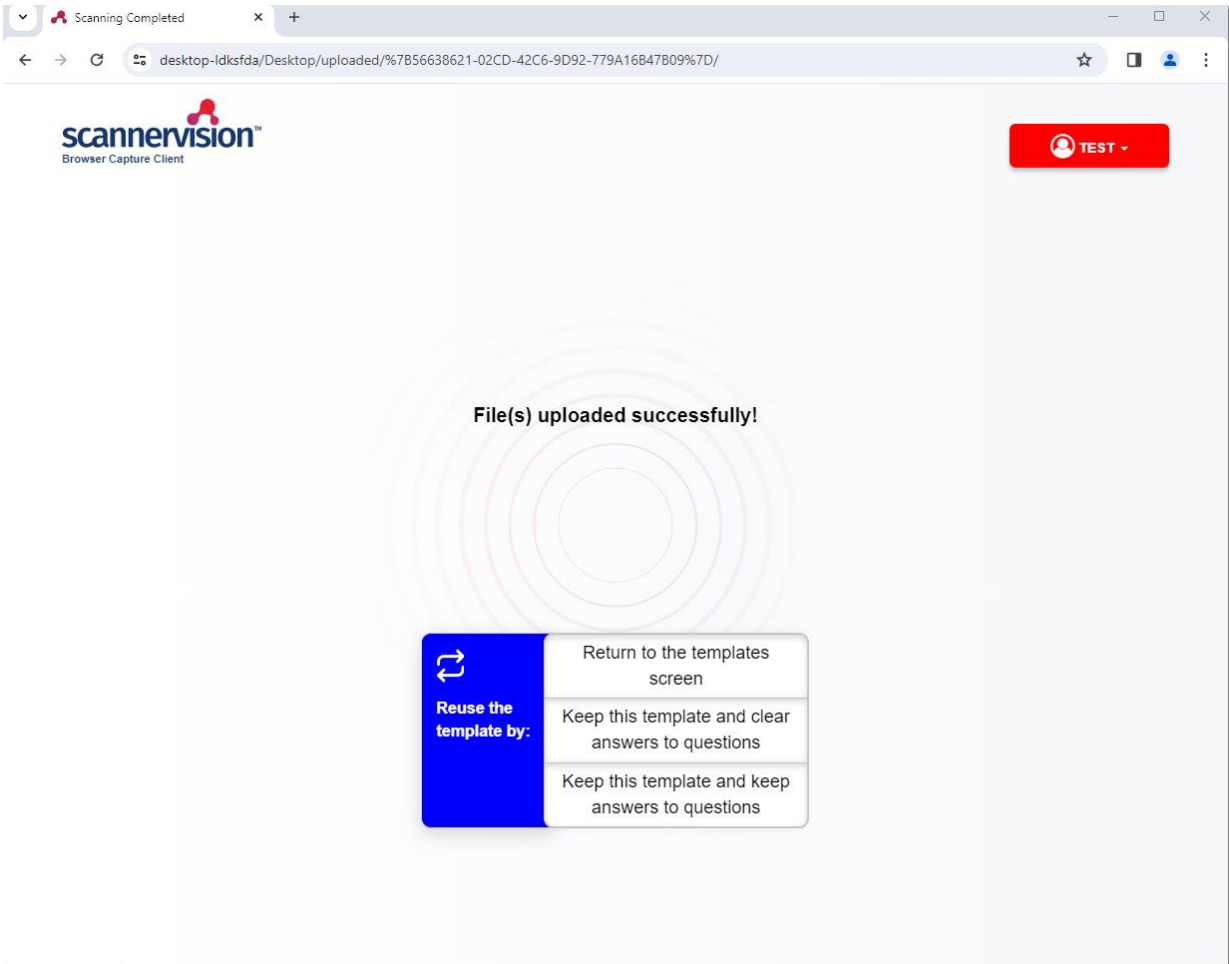


Supported file formats for the drag and drop area include:

- pdf
- doc
- docx
- xls
- xlsx
- tif
- tiff
- jpg
- jpeg
- png
- bmp
- ps

Template Page:

1. Choosing a template will prompt the display of questions associated with that template.
2. At the page's bottom, a drag-and-drop section is provided for effortless file selection or dropping directly from the file explorer.
3. To transfer the file to the server for additional processing, click the **"Upload"** button.



Upload complete Page:

After uploading the files, select an option based on the subsequent task you wish to perform.

Return to the templates screen: Returns to the templates screen from where you can select a new template.

Keep this template and clear answers to questions: This option takes you to the template questions screen of the currently selected template. The answers to all questions have been cleared.

Keep this template and keep answers to questions: This option takes you to the template questions screen of the currently selected template. The answers to all questions have been retained.



Ubunye Gibraltar

Suite 4, 2nd Floor
The West Wing,
Montarik House,
3 Bedlam Court,
GIBRALTAR GX11 1AA

Ubunye South Africa

Block A,
Regent Hill Office Park,
45 Leslie Road, Lonehill,
2191 Sandton
South Africa

Ubunye Asia

Unit 29-10, Q Sentral,
2A, Jalan Sentral 2,
50470 KL Sentral,
Kuala Lumpur,
Malaysia

BTSA America

22811
County Route 51,
Watertown,
New York, 13601,
United States