

User Import & Sync

Do more with
User Import & Sync

Simplifying user import from multiple sources



Users can be imported from Microsoft Active Directory (AD), CSV (CSV) files and databases(DB).

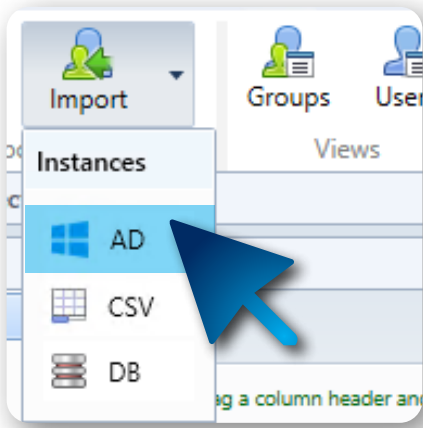
ScannerVision™ now offers a newly designed User Import tool. This allows you to import users from Microsoft Active Directory (AD), CSV (CSV) files and databases (DB). Users can be imported from one or more of these sources and imports can be scheduled using the Windows Task Scheduler.

Importing instances can either be scheduled individually from its respective configuration screen or an on-demand import of an instance can be scheduled.

The front end will also give you the ability to display the Users that will be Imported, this will show you exactly what will be imported into the **ScannerVision™** user database table.

All import sources now also offer a set of options that allows you to define the behavior of the particular import Source, for example, to import users who do not have an email address or to import users who do not have a home folder specified in the import source data.

Example of user import setup



Microsoft Active Directory (AD)

Let's Focus on the Microsoft Active Directory user import setup for a while.

When selecting the root organizational unit from where users must be imported, (after you have configured your AD server settings) you can press the refresh button in the top right-hand corner of the "Groups" section. This will allow you to see a list of the groups and organizational units available in your organization's Active Directory.

When you select a group or OU, the users in that group or OU is shown in the Users section.

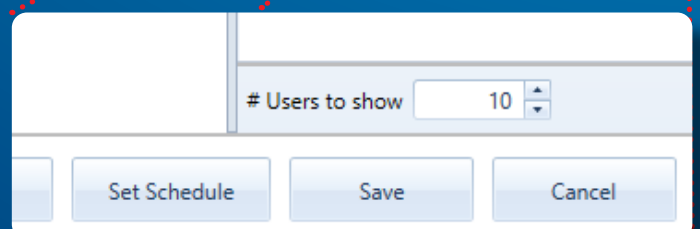
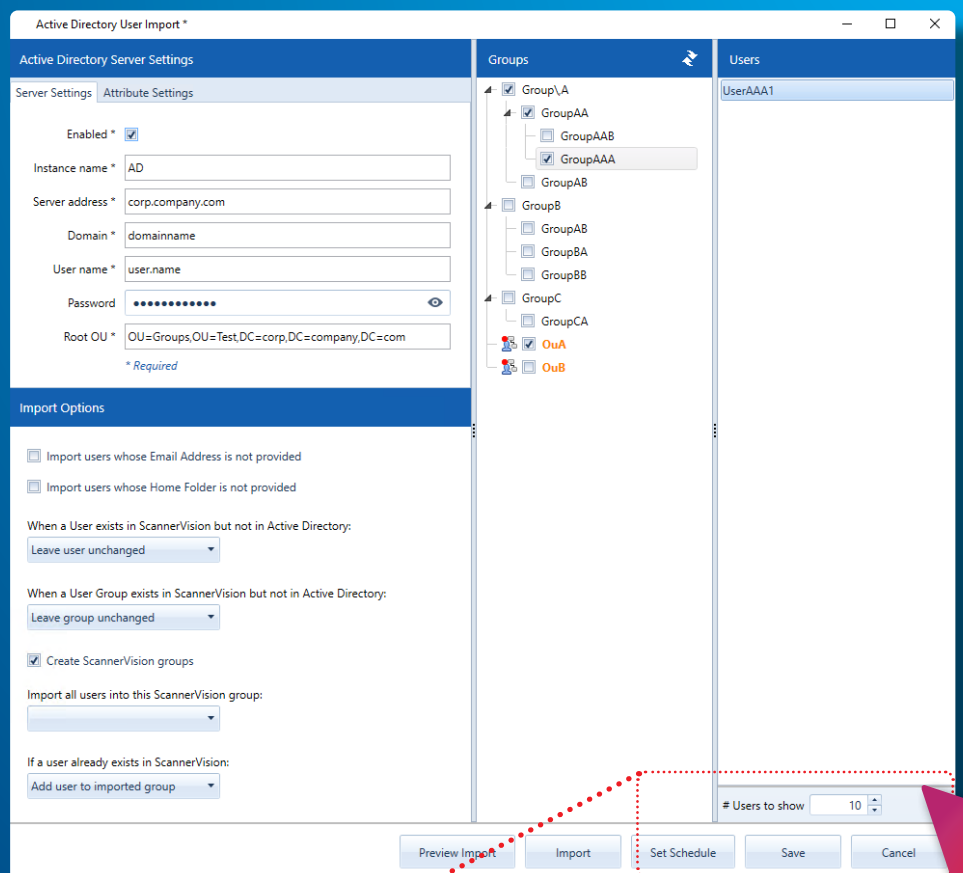
You can specify how many users must be loaded in the "# Users to show" edit box. OU's are shown in an orange color and has the OU icon to the left of the OU's name.

Specify total number of users

Only the groups and OUs which are selected, i.e. have a check mark next to the name, are imported. A context menu is available to facilitate expanding, collapsing, selection and deselection of all items and to refresh the list.

When you open the "Attribute Settings" tab and then select a user, a list is populated with user attributes obtained from AD. If you so choose to, you can select up to 4 of these attributes and map them to the relative user fields in **ScannerVision™**.

You can also specify a **ScannerVision™** Expression if you want to select portions from the attribute value. Please take note that If you do not map an attribute to a user field the value of the respective field of the user object returned by AD will be used. In other words, you can override only the fields you want.



ScannerVision™

*Productive
Efficient
Affordable*

ScannerVision™ Asia

Unit 18-3A, Menara Q Sentral,
No. 2A, Jalan Sentral 2,
Kuala Lumpur Sentral,
Kuala Lumpur, 50470,
Malaysia

ScannerVision™ South Africa

Block D, Stoneridge Office Park,
8 Greenstone Place, Greenstone,
1609 South Africa

ScannerVision™ Europe

Suites 41/42 Victoria House
26 Main Street,
GIBRALTAR GX111AA